

Quick Start Guide

Hole Shot Web Server Based Dynamometer Control System



The Full manual for Holeshoot is located within the software, which we will show you where it is located and the end of the Quick start guide. We would like Thank you for your purchase of Mustang Dynamometer's Hole Shot Control System. Your new controller uses a the most modern coding practices in use today and leverages the flexibility and convenience of a web based User Interface. We've optimized the system to work with most modern devices and browsers. Your system comes with the standard 4U rack and wireless router which connect you to your Mustang Chassis Dynamometer for control and display. The system is designed to be used with your existing devices, or "clients". You can connect to the server via the Hole Shot wi-fi network. You can use any device as the client – Windows PCs, Windows Laptops, Mac computers and laptops, Android devices, cell phones, Mustang's Android TV boxes, etc. As the system is web based you simply open your browser on your device and enter in your assigned IP address and this will launch the web application. Please note that more common browsers like Chrome and Firefox work on all devices and you may have difficulty with less common web browsers. Additionally, your Hole Shot server runs on Linux and while it can run the web application as the "local host" this practice strains the resources on the server. Please connect to your system through a wireless connection and your preferred electronic device's browser and avoid using your server as your portal to your dynamometer as it is counter-productive to do so. Rather, place your server in a safe place near your dynamometer such that it is out of the way and let it run. When you're ready to run your system connect to the holeshoot network and control your dynamometer from the client. To connect to a large display, or TV, use a computer or Mustang's Android TV box. As with other clients you simply launch the web browser, enter your assigned IP address and connect your display output (HDMI) to your HDMI equipped TV.

Connecting your client device to the server

After you have powered up your Hole Shot Server and Router the "holeshoot" service will show up on your device as an available wireless connection. Simply connect to the "holeshoot" wi-fi connection and type in the password, "holeshoot". Once connected you will then proceed to launch your web browser (Chrome, Firefox or Safari) and type in the assigned IP address in the address bar and hit enter. The Hole Shot web application will launch. Please bookmark this web application in the web browser's menu to allow for easy access at a later time. You can connect to the server as an active user (controller), a passive user or you can connect in spectator mode. The controller has access to the dynamometer functions while a passive user can only view current test, past tests, configure user settings and preferences and add new customers. Spectator mode is designed for lobby areas to promote your dynamometer's services by displaying power runs tests as they occur – including customer/vehicle information, live data, video streaming and results.

Wi-Fi Network Name: **holeshoot**

Wi-fi Password: **holeshoot**

IP Address: **192.168.0.33:3000 or 192.168.1.33:3000**

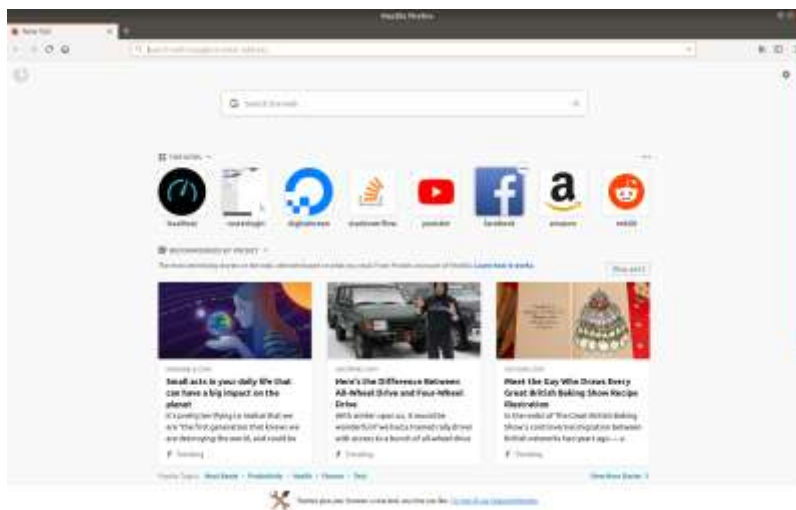
Your server

Once you power up the Gen 3 Controller you are ready to connect to it through your device that you are operating the dyno with the first screen you will see your device home screen. (See figure A)



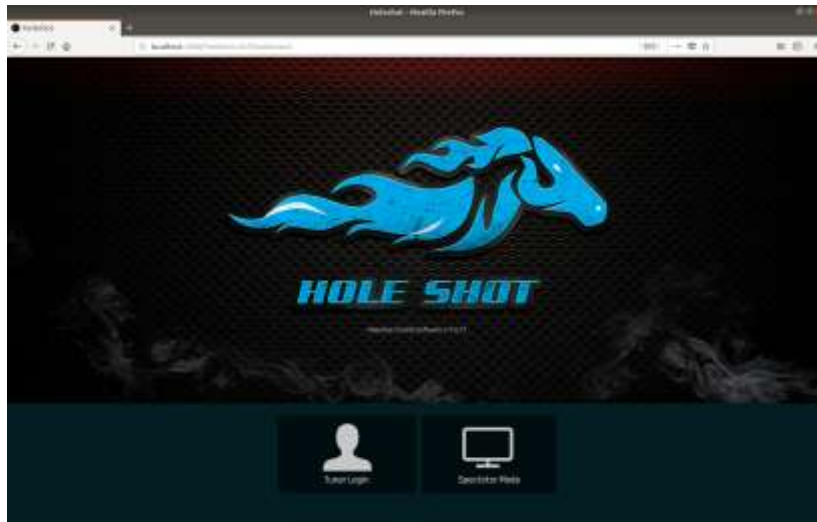
(Figure A)

From this screen you will need to Click on your preferred internet icon. It will bring up the following screen (See Figure B) NOTE: **While it is possible to control your dynamometer from the server it is not recommended. Please use a Windows, Android or Mac based client. The actual web application looks the same on all devices and its responsive UI will adjust to the size and type of client you choose.** The most versatile UI is the one that will display on computers, laptops and large tablets.



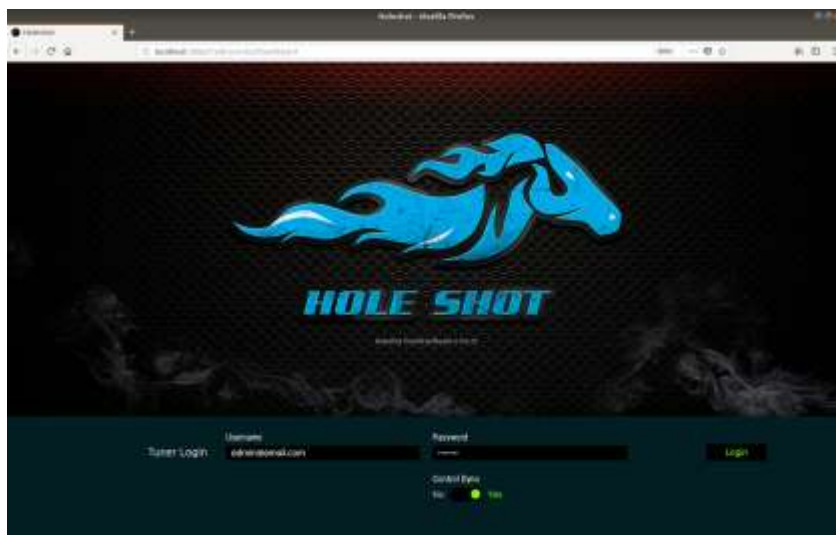
(Figure B)

You will Click on the task bar and type the following IP Address 192.168.0.33:3000 or 192.168.1.33:3000 which will pull up the HoleShot Login Screen. (See Figure C)



(Figure C)

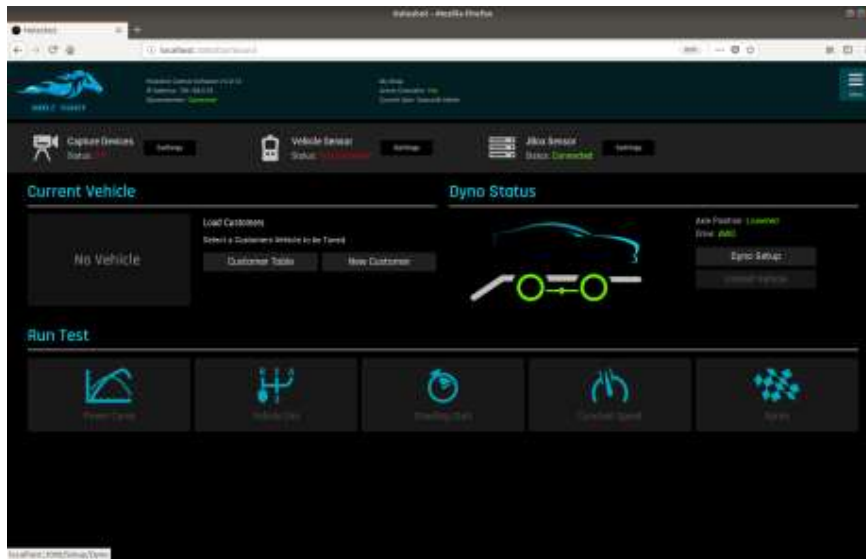
Once on this screen click on Tuner Login or Spectator Mode. Tuner Login will let you operate the dyno and spectator mode will let you view the dyno operation only. So click on Tuner Login and the next screen you will see it the Login screen. (See Figure D)



(Figure D)

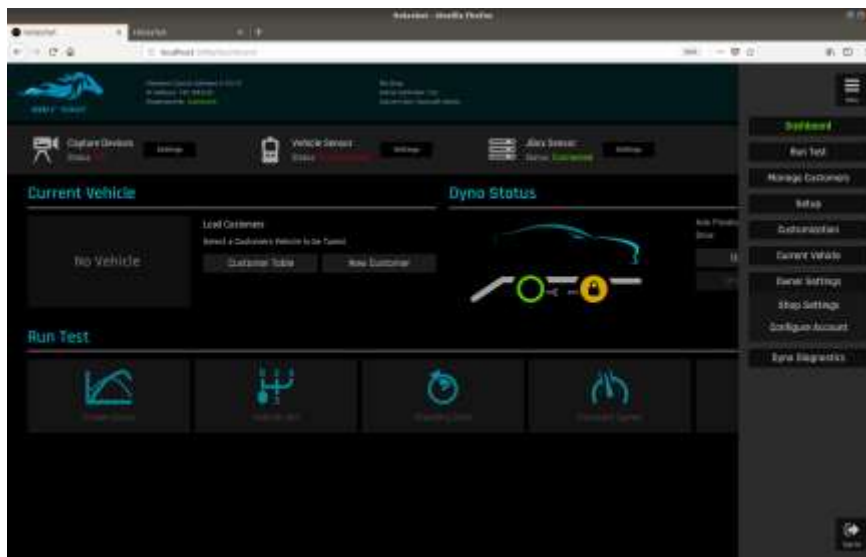
For your first sign in you will type admin@email.com into the Tuner Login and type password into the password area then just click Login on the right hand side.

Once you Login you will see the main screen. This is the screen to operate your dyno. (See Figure E)



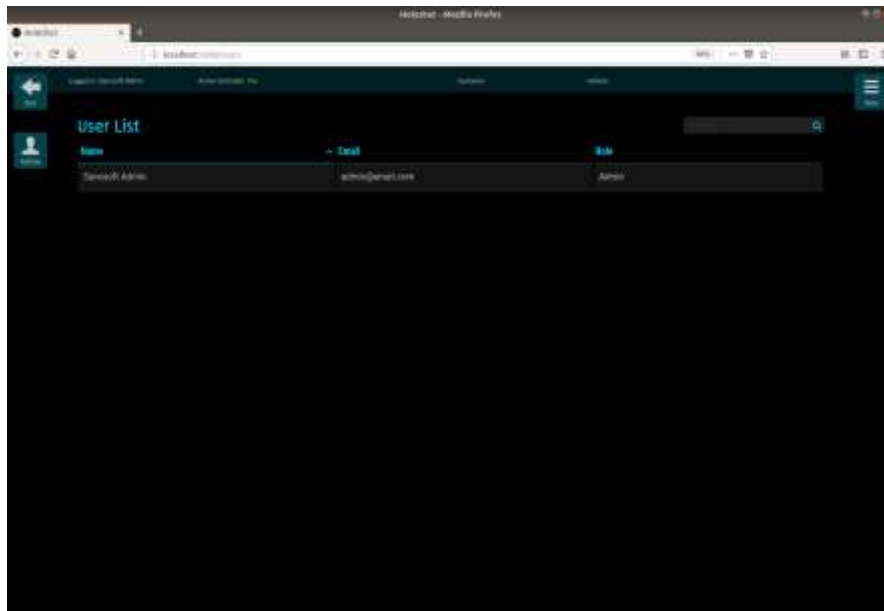
(Figure E)

We are now going to change your Login Name click on Menu in the top right corner and a drop screen will appear scroll down until you see Owner Settings and then click on Configure Account (See Figure F)



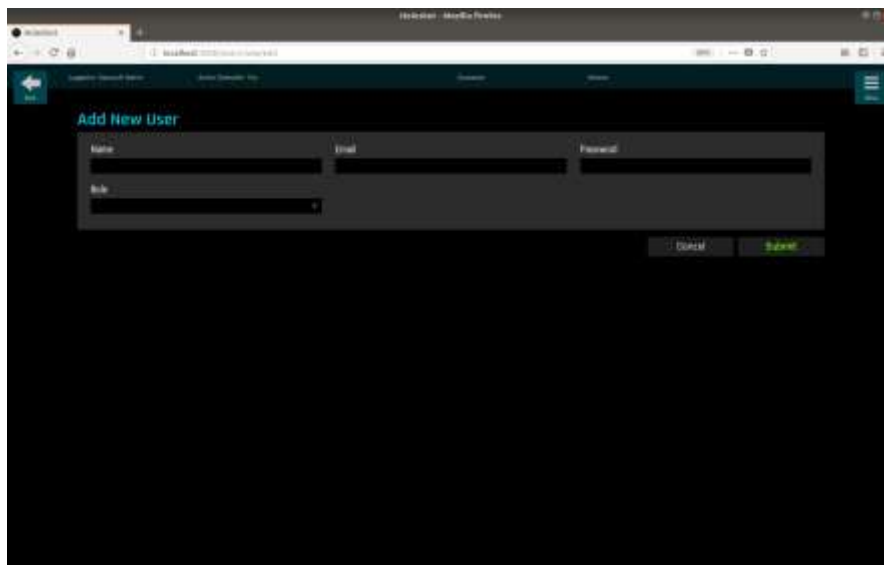
(Figure F)

Once you click on Configure Account you will see the next the following screen. (See figure G)



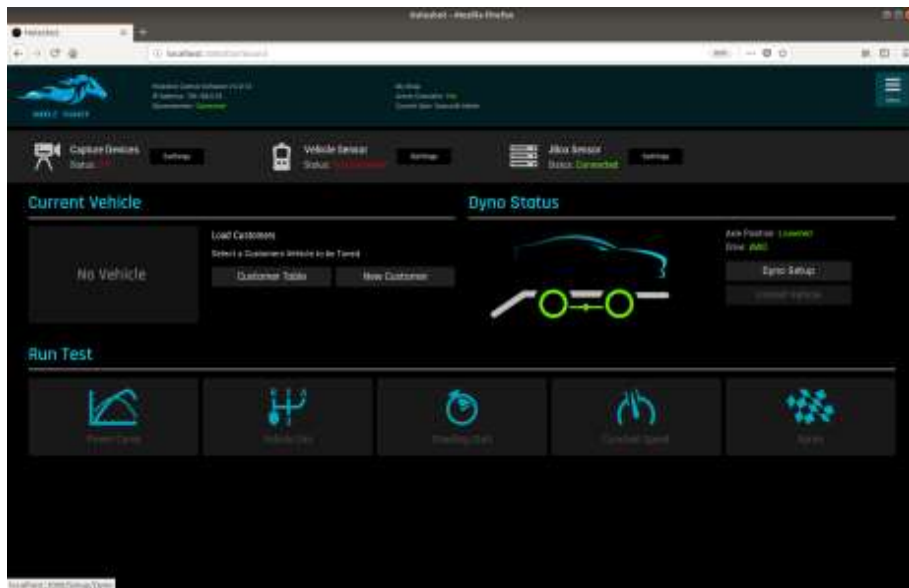
(Figure G)

Click on Add New Icon on the Left hand side. It will pull up another screen where you will fill out your information. It is key to provide the proper email address. (See Figure H)



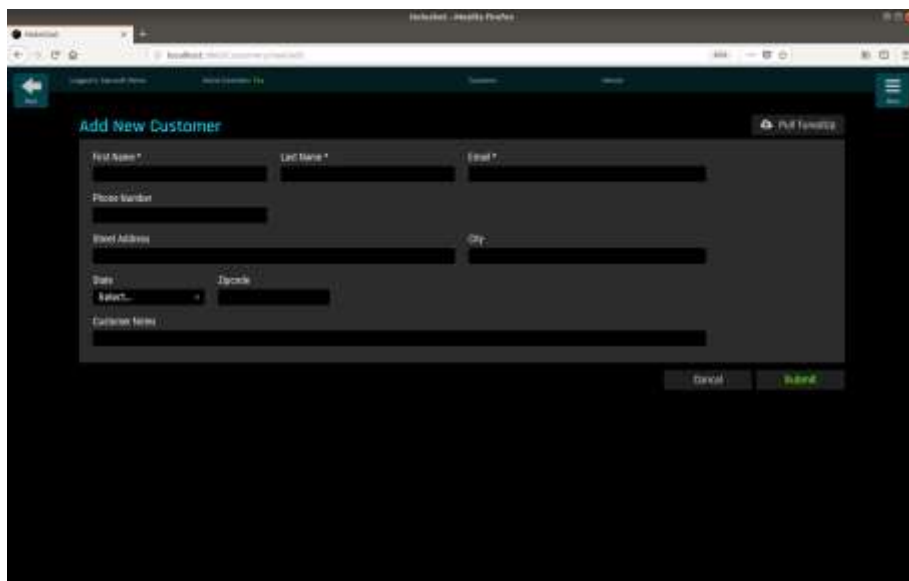
(Figure H)

Make sure you fill this all out and submit so the next time you login you can use your Login. Once completed you can go back to Owner settings and fill out your shop info. Now you can go back to your Main Screen Your now able to enter a new customer. In the middle of the Main Screen you will see Customer Table and New Customer. (See Figure I)



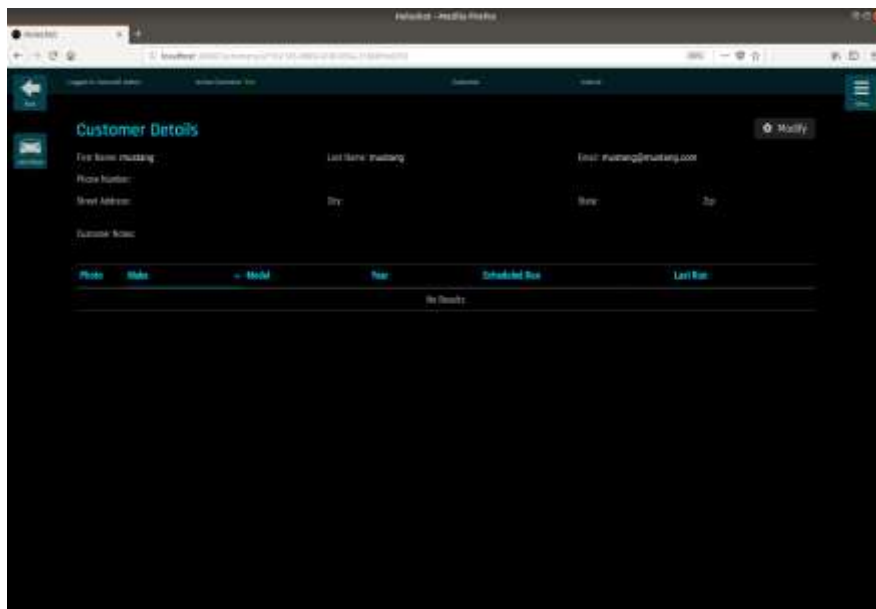
(Figure I)

Click on New Customer it will bring up the customer information Page (See Figure J)



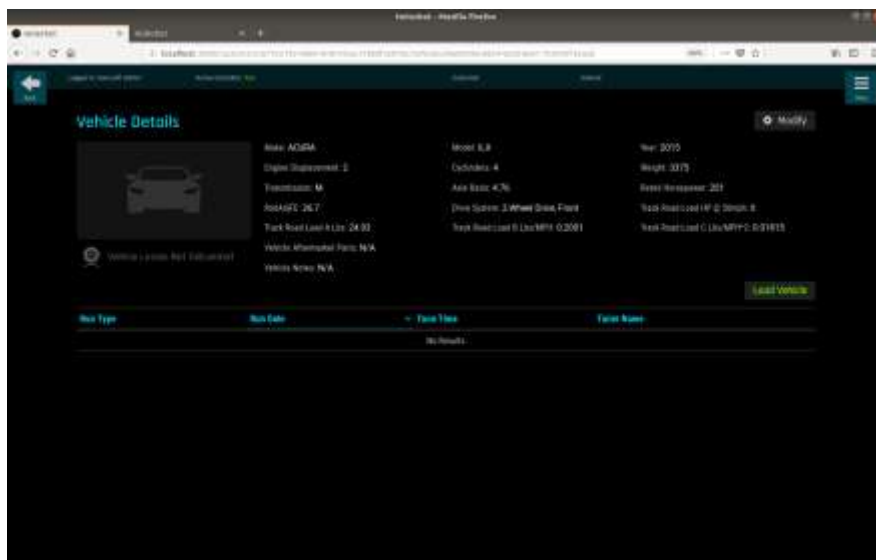
(Figure J)

After filling out the customer info click submit and now you can add the customer's vehicle. Click on Add vehicle and use the vehicle lookup table to select the vehicle. (See Figure K)



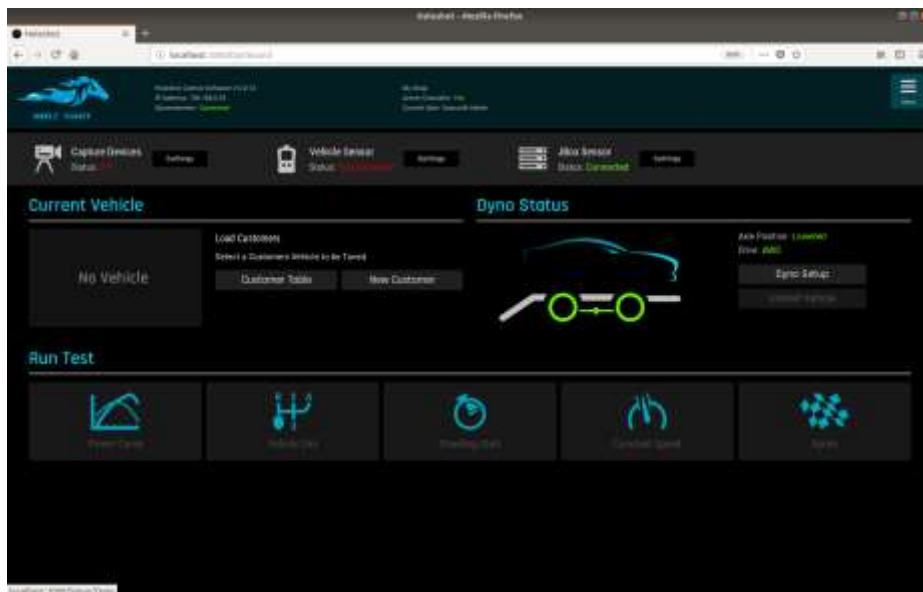
(Figure K)

Once the vehicle is selected you will click onto load vehicle. (See Figure L)



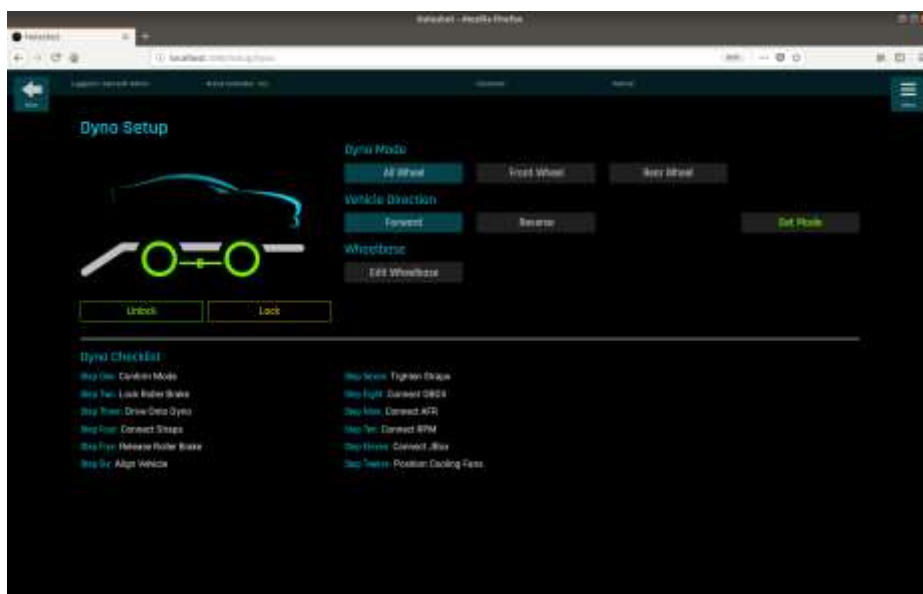
(Figure L)

After you load vehicle the software should take you back to the home screen if it does not click on the back button. Now you can click on dyno setup. It is located on the right hand side.(See Figure M)



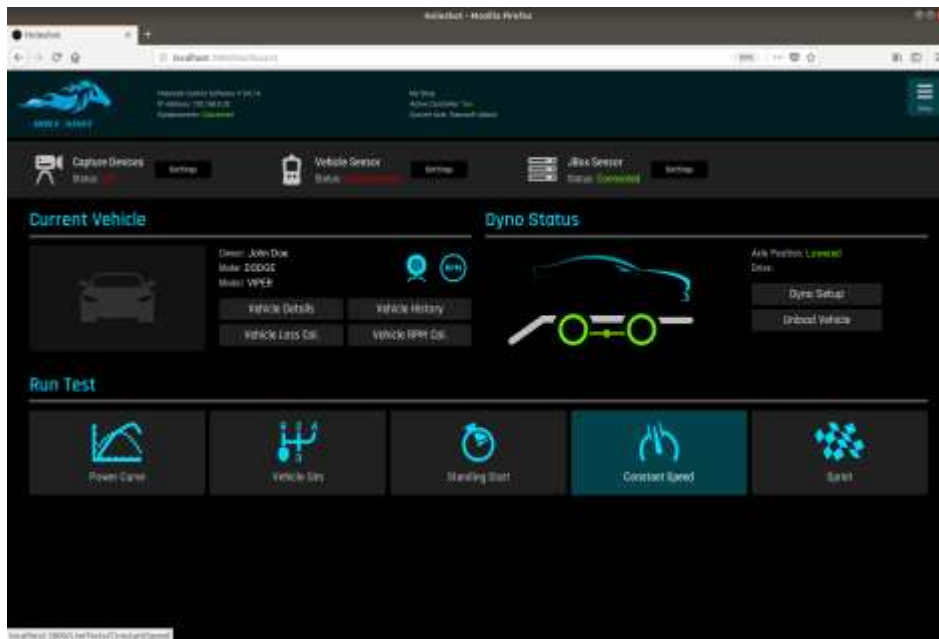
(Figure M)

Once you click on Dyno setup you will see the following Screen. (See Figure N)



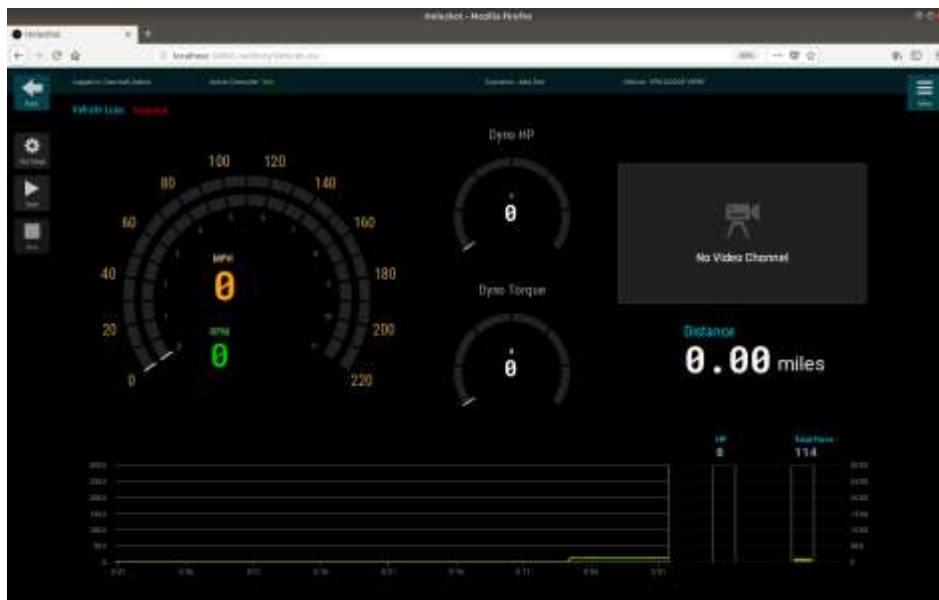
(Figure N)

Select your Dyno Mode that you are using then click Set Mode. This will lock the rolls so you can pull your vehicle onto the dyno. After the vehicle is on the dyno you scan strap the vehicle loosely to your anchor points. Then press the Unlock button which will unlock the rolls so you can straighten the vehicle. Once the vehicle is straight tighten down the vehicle. Click on the Menu button in the right top right corner and click Dashboard which will take you to the home screen. Now you can do a vehicle loss test. (See Figure O)



(Figure O)

Click the Vehicle Loss Cal Button to enter the next screen (See Figure P)



(Figure P)

Once here Click on Test Setup. You will need to enter the MPH of what you think is the top speed that you will reach during your HP Pull. Once you enter the number click on submit. (See Figure Q) Next you

will need to click on Start the software requires you to do 5mph over the MPH you submitted. Once you reached that speed put the vehicle in neutral and let it coast down to 0MPH.



Figure Q

Once you have done this the next step is to set your RPM. If you want to use Roll speed based RPM you will need to is to click on vehicle RPM Cal on the main screen. (See Figure R)

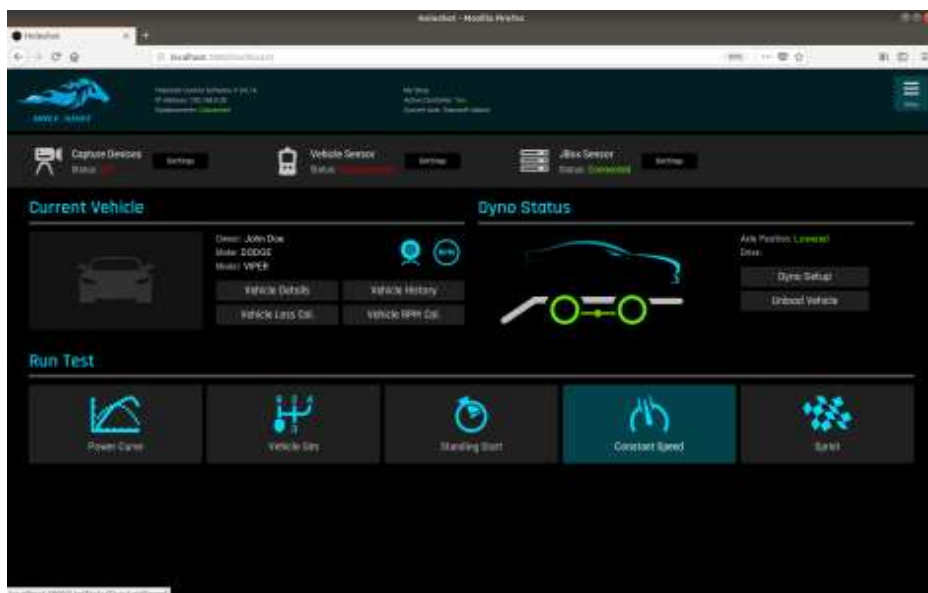


Figure R

Click on Vehicle RPM Cal which will bring you to the next screen. (See Figure S)

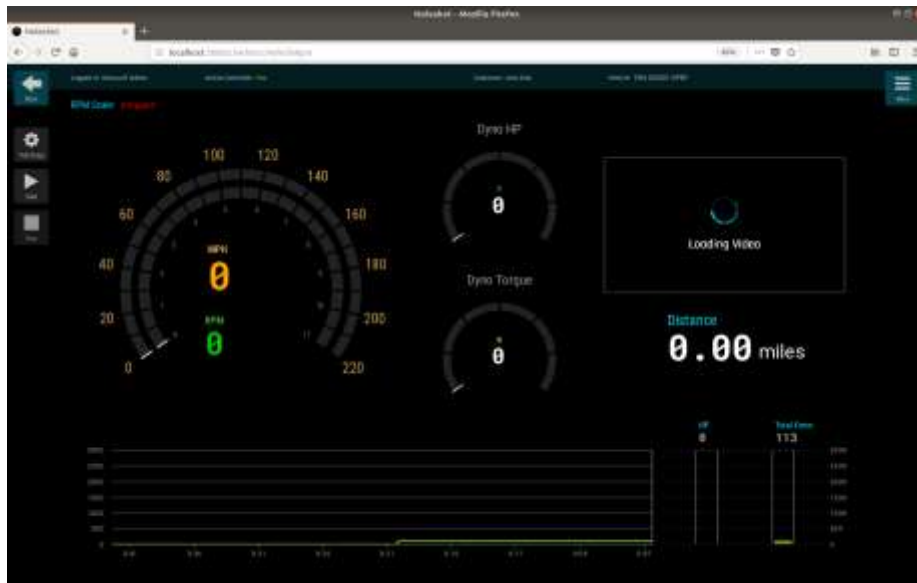


Figure S

On this screen click on Test Setup it will pull up the Following Screen (See Figure T)

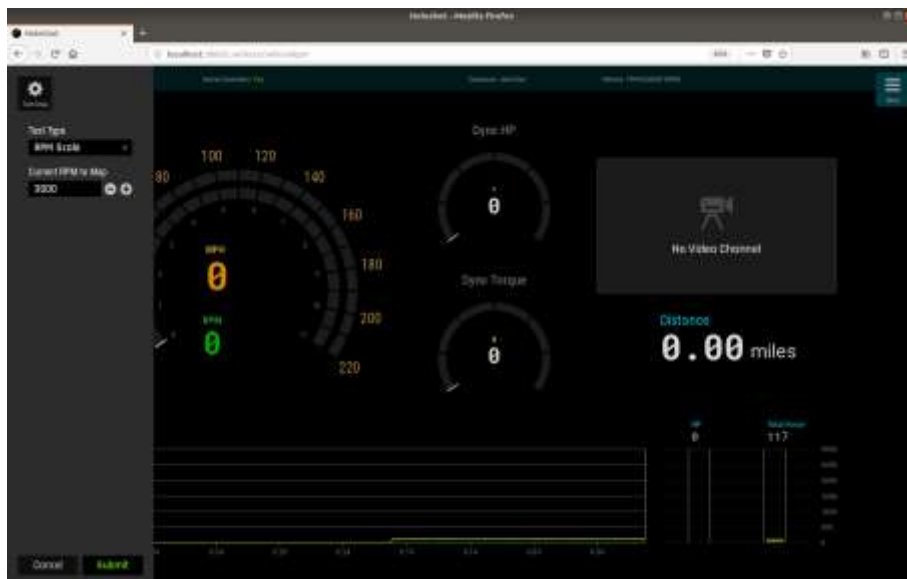
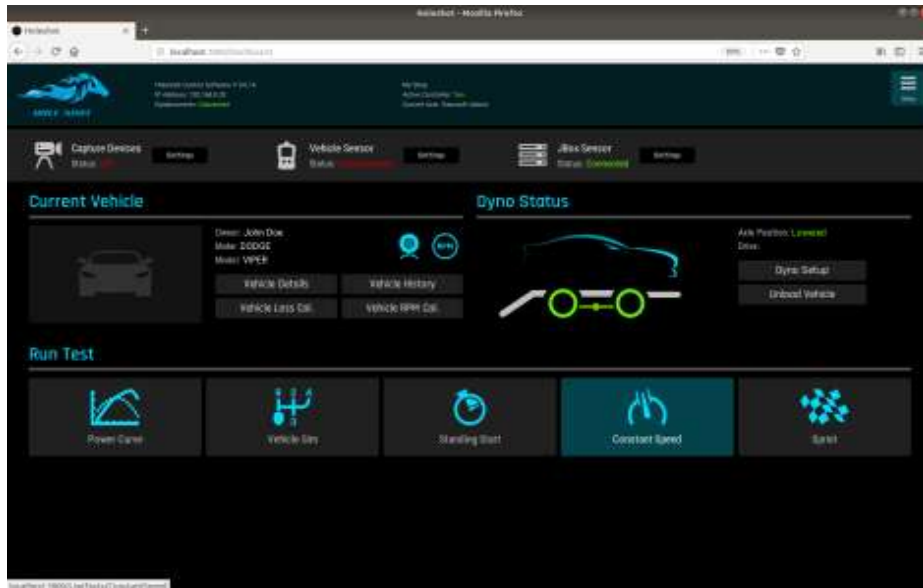


Figure T

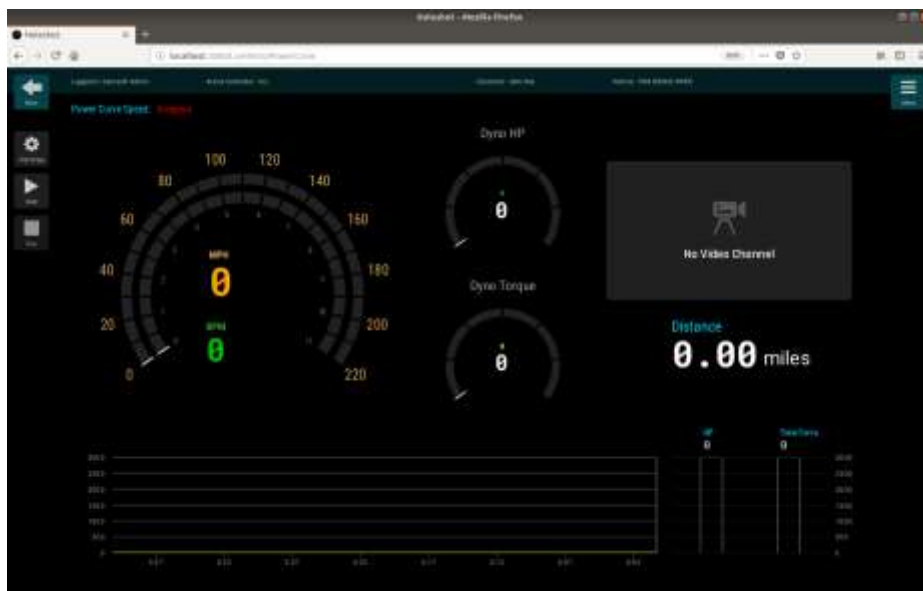
Set the test type to RPM Scale. Then under Current RPM to map Set your desired RPM. This RPM should be half of what your HP Pull range. So if you are doing a HP Pull from 3000rpm to 6000rpm you should make this number 4500rpm. With the car running in the test gear you are doing your pull in drive up to the RPM you set and hold it at that RPM and click Submit. Once you submit verify the RPM. Now we can

set up the test for your HP Pull. Click on the menu button on the top right hand corner then click on dashboard and it will bring you to your home screen. (See Figure U)



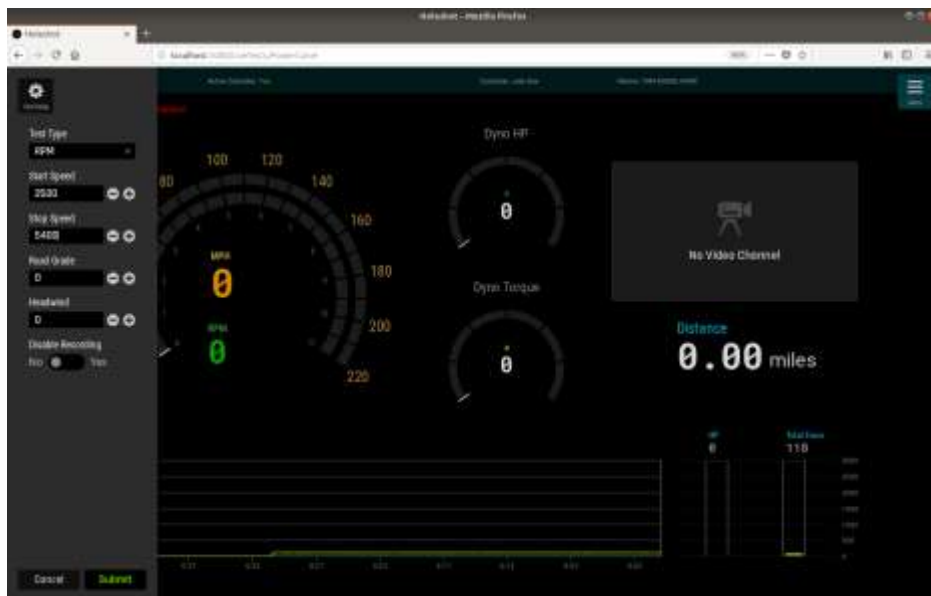
(Figure U)

Click on Power Curve and it will bring up the following screen (See Figure V)

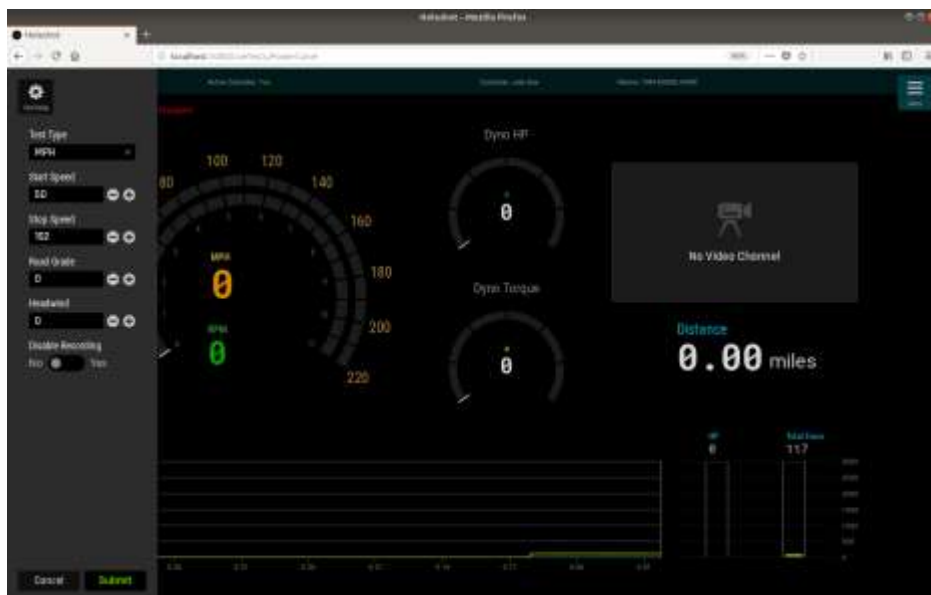


(Figure V)

Now click on Test Setup in the left hand corner. It will bring up the following screen. Under Test Type you have to options RPM OR MPH. Next set you start speed and stop speed. If you are using RPM your start and stop speed will be the RPM Range and if it MPH you will use MPH. The click submit (See Figure W and Figure X)



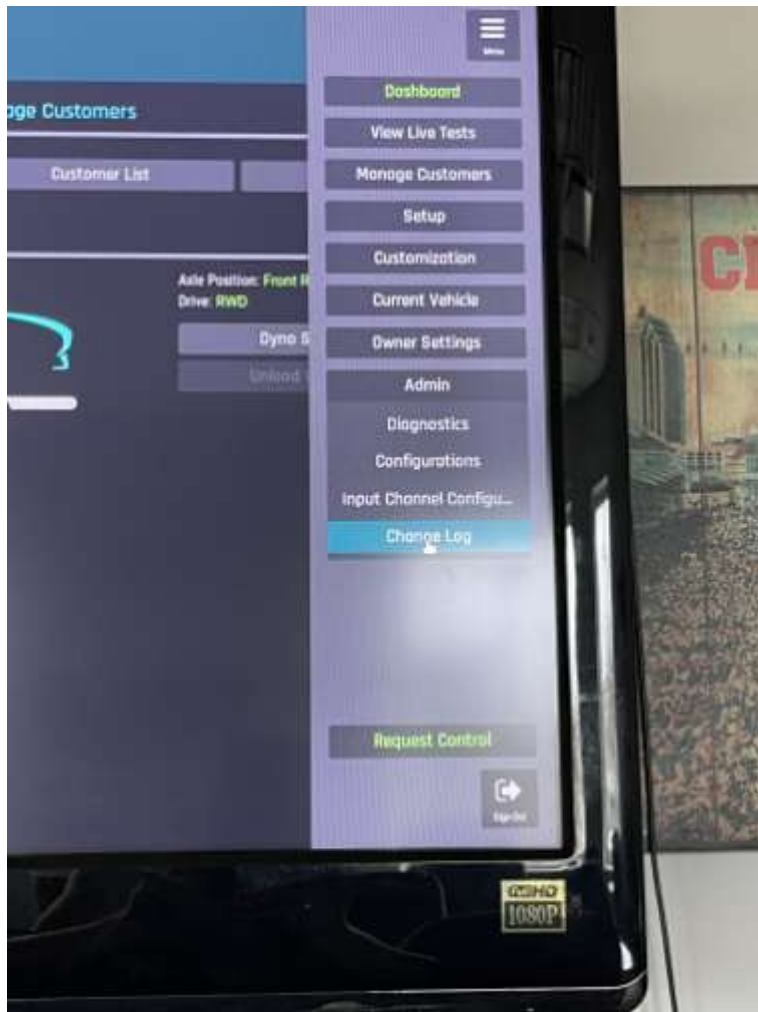
(Figure W)



(Figure X)

Once you click submit you are ready to do your HP Pull. Drive your car and get into your testing gear. Keep the car below your Start RPM Speed or MPH Speed click start and hammer down.

This is the location on where to find the Full Manual for Hole Shot. (See figure Y)



(Figure Y)

Under Menu the tab scroll down to Admin then to Change Log. Once you are in the change log in the top right hand corner you will see Download Manual. (see Figure Z)

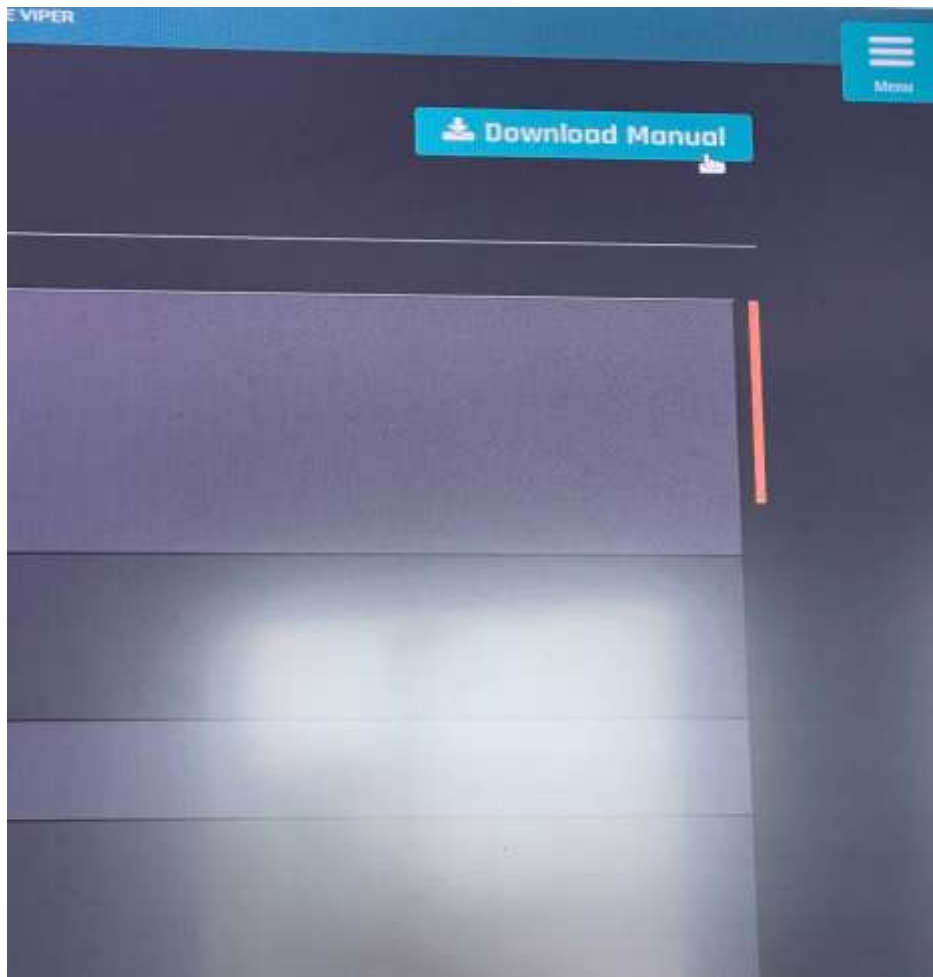


Figure Z

Once you locate the Download Manual Click download and it will open up the Full Hole Shot Manual.