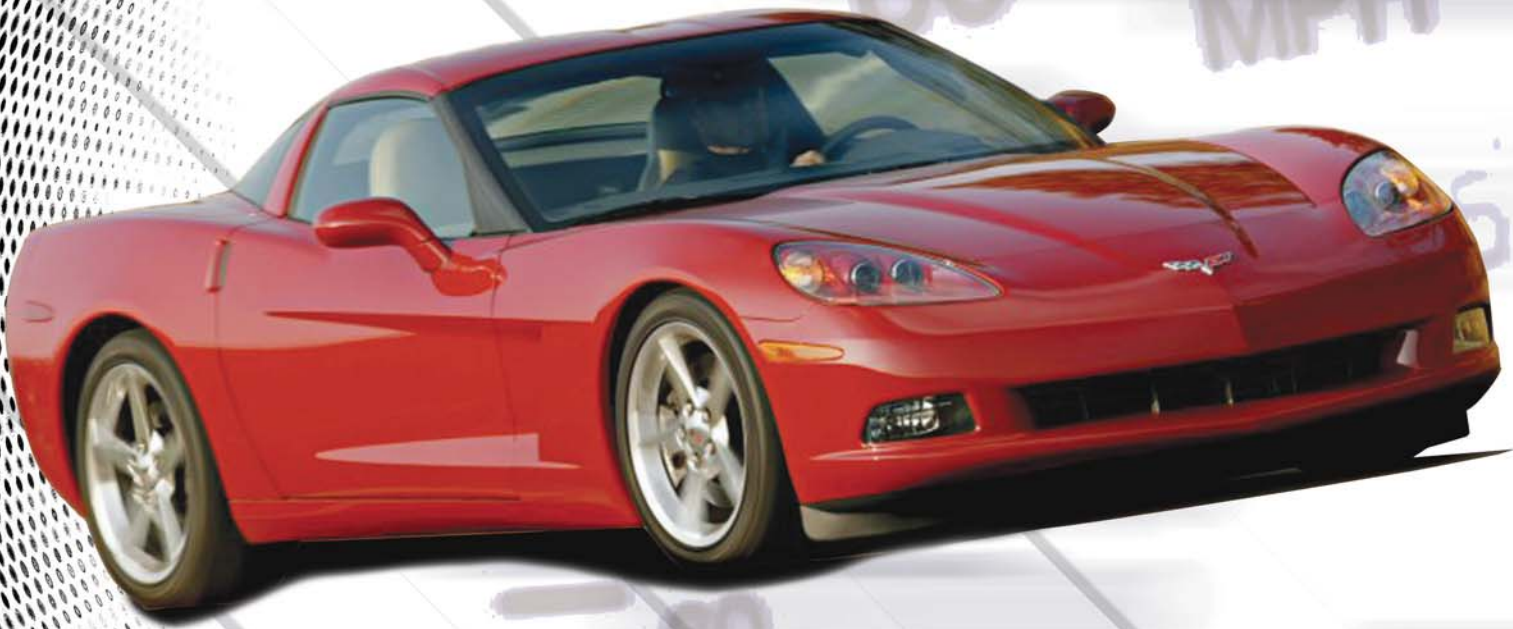


# MD-250

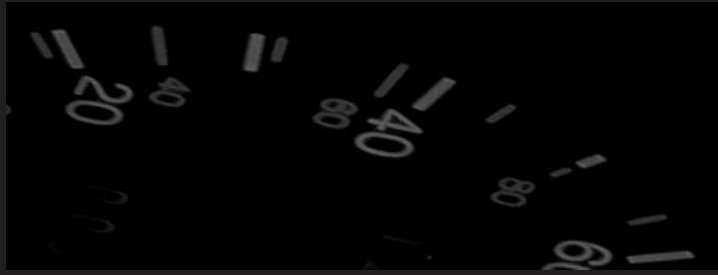
Dynamometer

**MD**<sup>®</sup>  
**MUSTANG**  
DYNAMOMETER



*No speed limits*

**The Classic MD-250 Chassis Dynamometer**  
 - the world's first truly high performance  
 eddy current chassis dyno - includes testing  
 capabilities for cars, trucks, motorcycles, and  
 ATV's.



For the fully equipped shop, nothing provides better in-house motor vehicle testing support than the Classic Mustang MD-250. Originally introduced in 1988, the 250 boasts a 900 horsepower measurement capacity and 605-hp worth of loading capacity. Don't be fooled by its compact size: the MD-250 is a serious dynamometer with serious tuning capabilities.

The MD-250 uses an eddy current power absorption unit (PAU) with air-cooled, frictionless operation and infinitely variable loading. A complete control and data acquisition system lets you design a wide range of tests and provides for both on-screen and print-out results - while an optional in-car hand held controller allows you to control all facets of testing from the vehicle's cabin. While designed for in-ground installation, the unit can be installed on the shop floor with the optional above-ground kit.



With a 600-hp PAU, the MD-250 is ideal for testing mid-sized trucks and high-performance street cars.

## MD-250

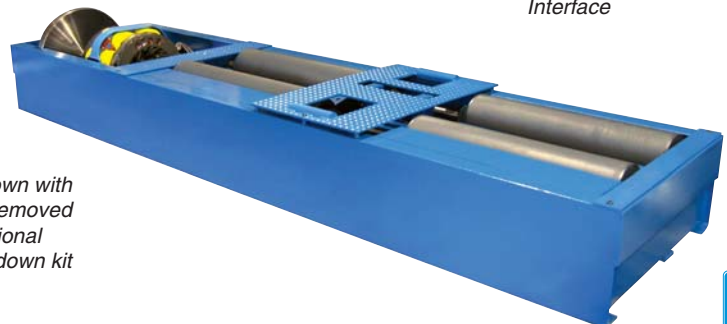
## CHASSIS DYNAMOMETER

<i>Horsepower:</i>	900 hp maximum measurement capability 605 hp peak absorption
<i>Loading:</i>	Air-cooled eddy current power absorber (MDK-250)
<i>Controls:</i>	DAC based Controller with Microsoft Windows™ based Software. Ethernet based communications between personal computer (optional) and controller. Includes Patented virtual Road Simulation Technology (RST)
<i>Hand Control:</i>	Wireless in-car controls available
<i>Rolls:</i>	Precision machined & dynamically balanced Knurled finish for superior tire traction Belted for bi-directional capability 10.70" (272 mm) diameter balanced rolls 40" (1,016 mm) face length 28" (711 mm) inner track width 108" (2,743 mm) outer track width 19.6" (498 mm) roll spacing
<i>Maximum Speed:</i>	150 mph (242 kph) Intermittent 110 mph (177 kph) Continuous
<i>Frame:</i>	Heavy-duty structural steel frame Heavy-duty restraint kit included
<i>Lift:</i>	Between roll lift with integrated roll lock
<i>Air Requirements:</i>	80 PSI, dry, regulated, oil free
<i>Power Requirements:</i>	115 VAC single phase, 60 Hz, 15 Amps (computer) 230 VAC single phase, 60 Hz, 40 Amps (dyno controls)
<i>Inertia:</i>	Approx. 2,000 lbs
<i>Axle Weight:</i>	12,000 lbs (5,455 kg) maximum
<i>Shipping Weight:</i>	4,500 lbs (2,046 kg) - dyno only
<i>Options:</i>	<ul style="list-style-type: none"> <li>• Vehicle Cooling Fan</li> <li>• SmartTach Engine RPM</li> <li>• Pressure Sensors</li> <li>• Air to Fuel Ratio Modules</li> <li>• Optical RPM Pick-up</li> <li>• Computer System with monitor</li> <li>• Above Ground Kit</li> <li>• Aboveground Ramps</li> <li>• Motorcycle Kit</li> <li>• On-site Training</li> <li>• Temperature Sensors</li> <li>• Weather Station</li> <li>• 5 Gas Analyzer</li> <li>• Integrated Xmas Tree</li> <li>• OBD Interface</li> <li>• Opacity Meter</li> <li>• Vehicle Pull Down Kit</li> <li>• Wireless Touchscreen Interface</li> </ul>

# MD<sup>®</sup> MUSTANG DYNAMOMETER

2300 Pinnacle Parkway  
 Twinsburg, Ohio 44087  
 Ph: (330) 963-5400  
 Fax: (330) 425-3310  
 www.mustangdyne.com

E-mail: sales@mustangdyne.com



MD-250 Shown with  
 PAU cover removed  
 and with optional  
 vehicle pull-down kit

• Specifications subject to change without notice  
 • Maximum power rating based on proper tire to roll contact and correctly restrained vehicle

